



DirectHome  
MEDICAL

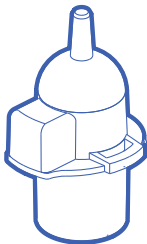
CLICK TO LEARN MORE

# SoClean®

## ADAPTER FOR HOSE AND MASK MAINTENANCE

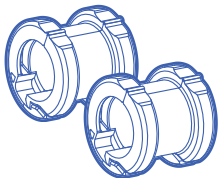
Compatible With Most Sleep Equipment Hoses

1 - SoClean Adapter



2 - Hose Sleeves

[For use with 12 mm hose]



INSTRUCTIONS FOR USE

PNA1604-23

**If you need help connecting  
your adapter, contact SoClean.**

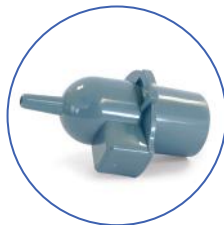
For SoClean operation information,  
please see the User Manual  
provided with the device.

An electronic version of the User  
Manual is available at [SoClean.com](http://SoClean.com)  
or you may contact Customer Care.

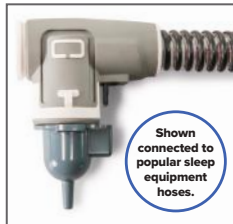
**IMPORTANT:** This adapter needs to fit  
snugly. If the fit appears too tight, do not  
force adapter into tubing. If the adapter is  
loose, call Customer Care at 866-501-3705.

**866-501-3705** | [SoClean.com](http://SoClean.com)  
[info@soclean.com](mailto:info@soclean.com)

## Installation Instructions



**SoClean Adapter**



Shown  
connected to  
popular sleep  
equipment  
hoses.

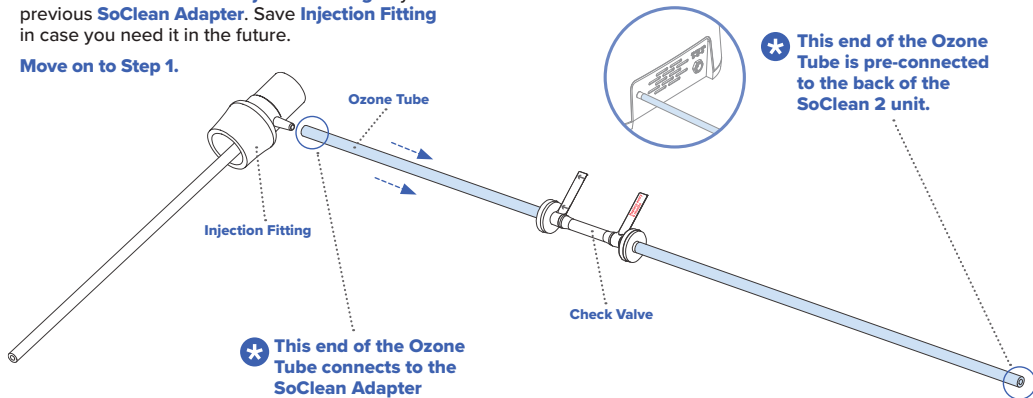
If you are a **SoClean 3** user, move on to **Step 1**.

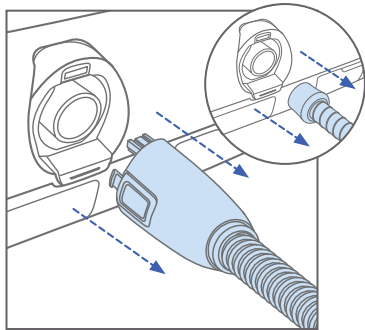


If you are a **SoClean 2** user:

Detach **Ozone Tube** from **Injection Fitting** or your previous **SoClean Adapter**. Save **Injection Fitting** in case you need it in the future.

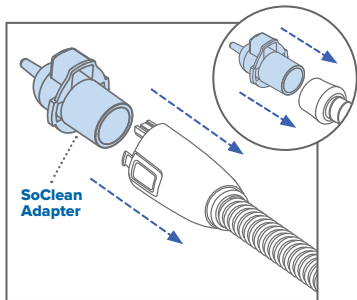
**Move on to Step 1.**





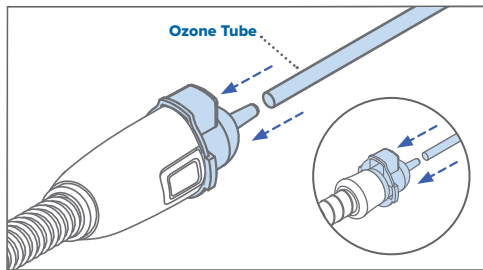
**1**

Remove the hose from your sleep equipment.



**2**

Install the SoClean Adapter onto the hose.



**3**

Connect **Ozone Tube** to the **SoClean Adapter**. You are now ready to use your SoClean.

Place mask into the **SoClean Chamber** and run the maintenance cycle.

**NOTE:** SoClean is not responsible for damage to your sleep equipment machine or personal property resulting from equipment mishandling.

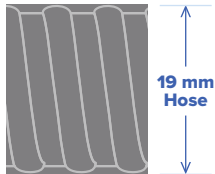
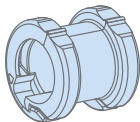


**WARNING:** The **Ozone Tube** should always be connected to the **SoClean Adapter** and the back of the SoClean unit when operating the SoClean.

## Sleep Equipment Hose Compatibility

For use with hose diameters of 15 mm and 19 mm and length up to 6' 6".

A 12 mm hose diameter will require a SoClean Hose Sleeve.



The images shown are actual size and can be used to determine which hose you have.

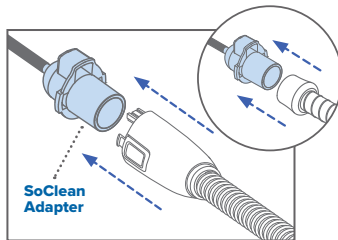


If you determine you require the Hose Sleeve, contact SoClean Customer Care or your authorized reseller.



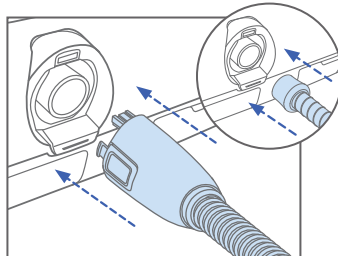
## Reconnecting Your Sleep Equipment

Once the **Maintenance Cycle** is complete and you are ready to use your sleep equipment:



1

Remove the **SoClean Adapter** from your hose.



2

Reconnect your hose to the sleep equipment hose port.

# Using Your SoClean

The below images show both SoClean devices connected.



Once you have completed the setup steps, you are ready to begin the daily maintenance of your sleep equipment accessories with your SoClean.

## Safety Checklist Before Using Your SoClean

- ☐ Sleep equipment accessories are washed in sink and dried before first use
- ☐ SoClean Adapter is installed on sleep equipment hose
- ☐ Ozone Tube is connected to the back of the SoClean unit and the SoClean Adapter
- ☐ Sleep equipment hose is still connected to the mask
- ☐ SoClean is powered on
- ☐ Filter is installed



**SoClean Inc.**

**1 Vose Farm Road | Peterborough, NH 03458  
866-501-3705**

**[SoClean.com/patents](https://SoClean.com/patents)**

**Issue Date: 01/2023**